



ARTISTRY

THEATER and VISUAL ARTS

SEASON 2024

CRAZY FOR YOU

MUSIC & LYRICS BY

GEORGE GERSHWIN & IRA GERSHWIN

BOOK BY KEN LUDWIG

Co Conception by Ken Ludwig and Mike Ockrent

Inspired by Material by Guy Bolton and John McGowan

JAN 25 - FEB 11, 2024

Artistry is grateful for the generosity
of our Production Sponsors,
Allan and Deborah Schneider

*Featuring
Anita Ruth and a
20-piece Orchestra
center stage!*

CRAZY FOR YOU is presented by
arrangement with Concord Theatricals.
www.concordtheatricals.com



WELCOME!

Welcome to Artistry! We are so glad that you are here. Artistry Theater & Visual Arts is a not for profit organization committed to presenting and producing excellent and accessible art. Check out our website to learn more about our upcoming educational opportunities and make sure to visit our latest exhibitions in the Inez Greenberg and Atrium Galleries. And of course we are thrilled to present great musical theater, like *CRAZY FOR YOU!*

The team at Artistry is grateful for all the artists and the community that comes together in support and celebration of the arts.

Enjoy the show!

BEN BAKKEN

PRODUCING ARTISTIC DIRECTOR

ERIC HERR-MADSEN

AUDIENCE SERVICES MANAGER

JESSICA SWANSON

VISUAL ARTS & OPERATIONS COORDINATOR

KATIE PHILLIPS

PRODUCTION & OPERATIONS MANAGER

KELLI FOSTER WARDER

EXECUTIVE ARTISTIC DIRECTOR

WILL RAFFERTY

TECHNICAL DIRECTOR & PRODUCTION ASSOCIATE

I.D.E.A.A.

**INCLUSION. DIVERSITY.
EQUITY. ACCESS.
ANTI-RACISM.**

Artistry is committed to fostering, cultivating and preserving a culture of inclusion, diversity, equity, accessibility, and anti-racism (IDEAA).

Our people are the most valuable asset we have. The collective sum of the individual differences, life experiences, knowledge, inventiveness, innovation, self-expression, unique capabilities and talent that our employees invest in their work represents a significant part of not only our culture, but our reputation and company's achievement as well.

We embrace and encourage our employees' differences in age, color, disability, ethnicity, family or marital status, gender identity or expression, language, national origin, physical and mental ability, political affiliation, race, religion, sexual orientation, socio-economic status, veteran status, and other characteristics that make our employees unique.

*Bloomington sits on Mni Sota
Makoce, the ancestral lands of
the Dakota people.*



ARTISTRY

THEATER and VISUAL ARTS

SEASON 2024

CRAZY FOR YOU

JAN 25 - FEB 11

A Broadway Classic
Featuring Anita Ruth and
the Artistry Orchestra!

APR 18 - MAY 12

Directed by **MAX WOJTANOWICZ**
Musical Direction by **RAYMOND BERG**
Choreography by **GABRIELLE
DOMINIQUE**



DISNEY'S NEWSIES THE MUSICAL

JUL 18 - AUG 11

Directed by **BEN BAKKEN**
Choreography by **RENEE GUITTAR**
Musical Direction by
KATE MARIANA BROWN

OCT 3 - 27

Directed & Choreographed by
KELLI FOSTER WARDER
Musical Direction by **JASON HANSEN**
Associate Direction & Choreography by
JOEY MILLER



SEASON PACKAGES ON SALE NOW

THE CAST

(in alphabetical order)

<i>Bela Zangler/Ensemble</i>	CHARLIE CLARK*
<i>Moose/Ensemble</i>	JONAH HALE
<i>Polly Baker/Ensemble</i>	ANNIKA ISBELL
<i>Irene Roth/Ensemble</i>	JACLYN MCDONALD
<i>Patsy/Ensemble</i>	MARLEY RITCHIE
<i>Everett Baker/</i>	FRANCE ROBERTS
<i>Eugene Fodor/Ensemble</i>	
<i>Custus/Ensemble</i>	CRIS SANCHEZ
<i>Mitzi/Ensemble/</i>	ELLY STAHLKE
<i>Dance Captain</i>	
<i>Lank Hawkins/</i>	CARL SWANSON
<i>Ensemble</i>	
<i>Tess/Ensemble</i>	DAYLE THEISEN
<i>Lottie Child/Patricia</i>	THERESE WALTH*
<i>Fodor/Ensemble</i>	
<i>Bobby Child</i>	KYLE WEILER*

UNDERSTUDIES

Understudies never substitute for a performer unless a specific announcement is made at the time of the performance.

For Bobby Child - JONAH HALE; for Polly Baker - JACLYN MCDONALD; for Bela Zangler - CARL SWANSON; for Irene Roth - DAYLE THEISEN; for Lottie Child/Patricia Fodor - MARLEY RITCHIE; for Lank Hawkins/Everett Baker/Eugene Fodor - CRIS SANCHEZ; for Tess/Patsy - ELLY STAHLKE



ACTORS'
EQUITY
ASSOCIATION 1913

* APPEARING THROUGH AN AGREEMENT BETWEEN THIS THEATRE AND ACTORS' EQUITY ASSOCIATION, THE UNION OF PROFESSIONAL ACTORS AND STAGE MANAGERS IN THE UNITED STATES.

THE ORCHESTRA

Conducted by **ANITA RUTH**

Piano/	DAWN BAKER	Trombone	JOHN ENGLAND
Rehearsal Pianist		Trombone	H. WADE CLARK
Reed	MARK HENDERSON	Percussion	BRIAN GLENN
Reed	WILLIAM OLSON	Violin	TERRY ELLIOTT
Reed	DANA DONNAY	Violin	ELLEN HACKER
Reed	RYAN GOLDEN	Violin	JOANNA PHILLIPS
Reed	MATT KRUEGER	Violin	ELIZABETH YORK
French Horn	KRISTEN HAUG	Violin	ELIZABETH LOUDON
French Horn	KIRA SEIDEL	Cello	AUDREY Q. SNYDER
Trumpet	JEREMY DURESKY	Cello	EDWARD CADMAN
Trumpet	LOREN ENDORF	Bass	JOAN GRIFFITH



Musical Numbers

Overture (*Orchestra*)

K-ra-zy For You (*Bobby*)

I Can't Be Bothered Now (*Bobby & Ensemble*)

Bidin' My Time

Things Are Looking Up (*Bobby*)

Could You Use Me? (*Bobby & Polly*)

Shall We Dance? (*Bobby & Polly*)

Girls Enter Nevada

Someone To Watch Over Me (*Polly*)

Slap That Bass

Embraceable You (*Polly & Bobby as Zangler*)

Tonight's The Night

I Got Rhythm

Entr'acte (*Orchestra*)

The Real American Folk Song

What Causes That? (*Bobby & Zangler*)

Naughty Baby (*Irene, Lank & Ensemble*)

Stiff Upper Lip (*Eugene, Patricia,
Bobby, Polly & Ensemble*)

They Can't Take That Away From Me (*Bobby*)

But Not For Me (*Polly*)

New Promenade (*Orchestra*)

Nice Work If You Can Get It (*Bobby & Ensemble*)

Reprise: Things Are Looking Up (*Everett*)

Finale

Curtain Call

Exit Music (*Orchestra*)



ARTISTRY
THEATER and VISUAL ARTS

\$35
Tickets
(Includes Fees)

THE TIME IS NOW
A MUSICAL CELEBRATION WITH
T. MYCHAEL RAMBO

FEATURING
ASHLEY DUBOSE
KENNADI HURST
THOMASINA PETRUS

ONE NIGHT ONLY!
SAT. FEB. 17 AT 7:30PM

BUY TICKETS ONLINE
ARTISTRYMN.ORG
952.563.8575

THE PRODUCTION TEAM

Stage Manager	SAMANTHA SMITH*
Asst. Stage Manager	CHARLENE HOLM*
Lighting Design	GRANT E. MERGES
Sound Design	COLLIN SHERRADEN
Technical Director	WILL RAFFERTY
Audio Engineer	RICHARD GRAHAM
Scenic Charge Artist	JENI TOLIFSON
Head Electrician	JEREMY ELLARBY
Costume Consultant	BRITT HILTON
Wardrobe Technician	EMILY GARST
Lead Stitcher	LAURA JONES
Production Manager/ Props Designer/ Costume Coordinator	KATIE PHILLIPS
Intimacy Coordinator	ELENA GLASS
Dialect Consult	KEELY WOLTER

Musical Direction by ANITA RUTH

Choreography by ELLY STAHLKE & KYLE WEILER

Directed by BEN BAKKEN



We are proud to inform and illuminate the South Metro with a broad range of artist-centric visual arts programming.

We believe that art is essential to a vibrant social fabric and civic life. Stop by our galleries before or after the show. To learn more visit artistrymn.org/exhibitions

**THANKS TO OUR
ADVERTISING
PARTNERS!**

entertaining you!
Chanhassen
DINNER THEATRES

SOUTH LOOP
CREATIVE
PLACEMAKING
IN THE SOUTH LOOP

CITY OF
BLOOMINGTON
MINNESOTA

**MCKNIGHT
FOUNDATION**



This activity is made possible by the voters of Minnesota through a Minnesota State Arts Board Operating Support Grant, thanks to a legislative appropriation from the arts & cultural heritage fund.

Our programs are printed by **THE PRINT SHOP**, right off 98th St. in Bloomington!

The Print Shop
MnPrintShop.com

Special thanks to HILL-MURRAY THEATRE & THE ORDWAY!



CHARLIE CLARK* (he/him) *Bela Zangler*
ARTISTRY: *The Bridges of Madison County* (Bud), *Mary Poppins* (Mr. Banks) **THEATER:** Theatre Latté Da: *Merrily We Roll Along* (Joe Josephson); *12 Angry Men* the musical (Juror #3). Old Log Theatre: *Guys and Dolls* (Nathan Detroit). Tent Theatre: *Catch Me if You Can* (Hanratty). Ensemble Theatre

Cincinnati: *Fun Home* (Bruce); *Luna Gale* (Pastor Jay); *Rapture, Blister, Burn* (Don). New Stage Collective: *Sunday in the Park with George* (George). The Carnegie: *Dirty Rotten Scoundrels* (Freddie); *Carousel* (Enoch Snow). Indiana Repertory: *On Golden Pond* (Charlie). Porchlight Music Theatre Chicago: *Company* (Bobby). For Greta, Ben, Jack and Owen.



JONAH HALE (he/him) *Moose* **ARTISTRY:** Debut. Jonah is thrilled to be back in Minnesota and making his Artistry debut. Originally from Minnesota, Jonah is now based in NYC and holds a B.A. in Theatre Performance and a Minor in Dance from Wagner College. Jonah was last seen in the Twin Cities in *Footloose* at CDT, *Pirates of*

Penzance at the Ordway, and *A Christmas Carol* at the Guthrie. Favorite regional credits include *42nd Street* (Billy), *Grease* (Kenickie), *The Wedding Singer* (Sammy), and *Ghost* (Carl). Jonah would like to thank his friends and family for all their love and support.



ANNIKA ISBELL (she/her) *Polly Baker*
ARTISTRY: *The Pajama Game* (Poopsie, u/s Mabel); *Godspell* (Swing) **THEATER:** Lyric Arts: *A Chorus Line* (Maggie Winslow); DalekoArts: *White Christmas*. Annika is thrilled to return to Artistry with this wonderful group of people! Annika is a Twin Cities native and an alumni of St. Olaf

College. She'd like to thank her family for their constant support and love, and her first grade teacher Mr. Roberts for inspiring her love of musical theatre.



JACLYN MCDONALD (she/her) *Irene Roth*
ARTISTRY: Debut. **THEATER:** Lyric Arts: *A Chorus Line* (Cassie); *Anything Goes* (Reno Sweeney); *The Wedding Singer* (Linda). Theatre Latte Da: *Chicago* (Six, US Roxie). Ordway: *Gotta Dance Cabaret* (Self).

DalekoArts: *She Loves Me* (Ilona). Jaclyn is

thrilled to be making her Artistry Debut with this amazing group of people. When she isn't performing, she owns a State Farm Insurance agency with her husband in Hopkins! @insurewithdanny "Thank you so much for being here and supporting the arts. I hope you enjoy the show!"



MARLEY RITCHIE (she/they) *Patsy*
ARTISTRY: Debut! **THEATER:** Lyric Arts: *A Chorus Line* (Diana), *Something Rotten!* (Ensemble), *Smokey Joe's Cafe* (Ensemble). Emerging Professionals Ensemble: *Hair* (Dione), *Rocky Horror Show* (Frank N. Furter), *Spring Awakening* (Martha). Morris Park Player: *Ragtime*

(Sarah), *Falsettos* (Cordelia). Orthogonal Productions: *Rocky Horror Show* (Columbia). Marley is thrilled to be making her Artistry debut and hopes you enjoy the show! @mritch17



FRANCE A. ROBERTS (he/him/his) *Everett Hawkins/Eugene Fodor/Perkins*
ARTISTRY: *Shrek* (Ensemble), *Footloose* (Wes Warnicker), *Our Town* (Joe Stoddard), *Victor/Victoria* (Ensemble), *The Music Man* (Marcellus), *Mary Poppins* (Ensemble), *Joseph and the Amazing Technicolor*

Dreamcoat (Potphar, Ensemble), *The Drowsy Chaperone* (Ensemble), *Fiddler on the Roof* (Ensemble), *Phantom* (Ensemble), *Carousel* (Ensemble) **THEATER:** Minnetonka Theatre: *The Sound of Music* (Max Detweiler), *Little Women* (Mr. Laurence), *Joseph and the Amazing Technicolor Dreamcoat* (Levi/Baker), *Beauty and the Beast* (Cogsworth), *Sister Act* (Eddie Souther), *Disney's The Little Mermaid* (Sebastian), *Chitty Chitty Bang Bang* (Boris, The Wizard of Oz (Scarecrow). Open Eye Theater: *Log Jam* (Hot Biscuit Slim), *Hair Ball* (Sheldon Middlethorpe Witherspoon) *Loch Ness* (Barrymore J. Davenport). Lyric Arts: *The Wedding Singer* (Ensemble), *Guys and Dolls* (Rusty Charlie), *Lilies of the Field* (Homer Smith), *To Kill A Mockingbird* (Tom Robinson). France is thrilled to be back on the Artistry stage; he holds a BA in Elementary Education from University of Minnesota Moorhead, and a MFA in Curriculum and Instruction from Hamline University.



CRIS SANCHEZ (he/him/his) *Custus*
ARTISTRY: *The Pajama Game* (Joe/ Ensemble, Prez u/s) **THEATER:** Lyric Arts: *A Chorus Line* (Paul), *The Wedding Singer* (George). Old Log Theater: *Once Upon a Mattress* (Swing), *Escape to Margaritaville* (Jamal/Ensemble). Morris Park Players: *Falsettos* (Whizzer), *Big Fish* (Ensemble).

Emerging Professional Ensemble: *RENT* (Angel), *Ride the Cyclone* (Dance Captain), *PIPPIN* (Lewis), *HAIR* (Woof). MMT: *The Charm* (Character Man). Cris is over the moon to be back at Artistry! This spring you can catch him as Josh/ Ensemble in *9 to 5* at Lyric Arts. Shoutout to Erik and Peppermint!! @cris_rsc www.sanchezcris.com



ELLY STAHLKE (she/her) *Mitzi/Dance Captain/Co-Choreographer*

ARTISTRY: Fifteen productions, favorites include *Joseph and the Amazing Technicolor Dreamcoat* and *Songs for a New World*. **THEATER:** Theatre Laté Da: *Hello Dolly* (Ensemble), *Chicago* (Ensemble). Chanhassen Dinner Theatres:

Footloose (Ensemble). Collide Theatrical Dance Company: *Wonderland* (Cheshire Cat), *Romeo and Juliet* (Benvolio), *The Great Gatsby* (Ensemble). Ely is grateful to be back at Artistry for *Crazy for You*, and hopes you enjoy the show! *Drive fast, take chances, eat donuts for dinner.*



CARL SWANSON (he/him/his) *Lank Hawkins* **ARTISTRY:** *The Pajama Game* (Hines), *Memphis* (Mr. Simmons), *Wit* (Ensemble), *The Drowsy Chaperone* (George) **THEATER:** National Tour: *NOEL the Musical* (Napoleon/Edgar US). History Theatre: *The Boy Wonder*. The Ordway: *Beauty and the Beast* (The Baker/

Ensemble). Children's Theater Company: *Cinderella* (Ensemble). Old Log Theater: *The Play That Goes Wrong* (Robert), *How I Became a Pirate* (Swill). Trademark Theatre: *The Reunion* (Peter) Lyric Arts: *Something Rotten!* (Shakespeare), *If/Then* (Lucas), *Bright Star* (Daryl). Theatre Pro Rata: *Silent Sky* (Peter Shaw). Theatre Elision: *Ain't it a Grand and Glorious Feeling* (Matt). Bethel Summer Theatre: *A Year with Frog and Toad* (Toad). FILM: *Sanctified* (Streaming Soon), *Road to Damascus* (Currently on Amazon). www.carldswanson.com Instagram: @carldswan



DAYLE THEISEN (she/her) *Tess* **ARTISTRY:** *The Pajama Game* (Brenda) **THEATER:** Blank Theatre Company: *Promises, Promises* (Miss Della Hoya). Theater Laté Da: *Hello Dolly* (Minnie Fay u/s, Ermengarde). Ordway: *Disney's Beauty and the Beast* (Les Filles De La Ville). O'Malley Theater: *A Chorus Line*

(Judy Turner); *Anything Goes* (Ensemble); *Little Women* (Ensemble, Mrs. Kirk u/s). Leavenworth Summer Theater: *Pirates of Penzance* (Edith); *Hello Dolly* (Ensemble); *The Sound of Music* (Ensemble). FILM: Amazon Prime - *The Promise of the Butterfly*. Dayle holds a BFA in Musical Theatre (Dance Emphasis) from The Chicago College of Performing Arts. Dayle is delighted to be back with Artistry & this team! dayletheisen.com



THERESE WALTH* (she/her) *Lottie Child/Patricia Fodor* **ARTISTRY:** *Shrek* (Ensemble, Fiona u/s); *Memphis* (Ensemble)

THEATER: Chanhassen Dinner Theatre, (*Mamma Mia*, *Sister Act*, *Grease*, *Bye Bye Birdie*, *Hairspray*) The Guthrie Theatre (*The Music Man*, *Two Gentlemen of Verona*), The Ordway (*Broadway Song*

Book: Gershwin) The Jungle Theatre (*The World Goes 'Round, Urinetown*) and Bloomington Civic Theatre (*Les Miserables*, *Kiss Me Kate*), Minnetonka Theatre (*Mame*), among others. Therese is also the Artistic Director of Theatre and Choir Director at Hill-Murray School in

Maplewood. She is very excited to be back on stage at Artistry.



KYLE WEILER* (he/him) *Bobby Child/Co-Choreographer* **ARTISTRY:** *Godspell* (Choreographer) **THEATER:** Broadway & National Tours: *Hamilton* (Universal Swing, Dance Captain). International Tour: *West Side Story* (Diesel, Riff, Dance Captain). Theatre Laté Da: *Next to Normal* (Gabe), *Hello Dolly*. Duluth Playhouse: *Young Frankenstein* (Frederick Frankenstein.)

Ordway: *Damn Yankees*. Regional Theatre: Theatre Aspen, Guthrie, Children's Theatre Company. Choreography: Theatre Laté Da (*Next to Normal*), Chicago Opera Theatre, Artistry (*Godspell*), Daleko Arts, The Great Theatre, Theater Aspen, Ashland Productions, Children's Theatre Co. Directing: *She Loves Me* (Lakeshore Players). *Company* (Ashland Productions), *AD Life and Death(s) of Alan Turing* (COT.) Upcoming Directing: MN Opera. Kyle holds a B.F.A The Juilliard School. @kyle__weil

SAMANTHA SMITH* (she/her) *Stage Manager* **ARTISTRY:** *Some Enchanted Evening*, *Memphis*, *Little Women* (Stagehand) **THEATER:** Yellow Tree Theatre: *The Rats and The Wasp's Nest* (Stage Manager); *Lady Day at Emerson's Bar and Grill* (ASM); *Misery* (ASM). Theatre L'Homme Dieu: *Beautiful: The Carole King Musical* (Stage Manager); *Dancing Lessons* (ASM). Guthrie Theater: *A Christmas Carol* (Stagehand). Samantha holds a BA (Hons) in Drama and Theatre Arts from Goldsmiths, University of London.

CHARLENE HOLM* (fae/fem/faer) *Assistant Stage Manager* **ARTISTRY:** *The 25th Annual Putnam County Spelling Bee*. Charlene Holm is primarily a production assistant and assistant stage manager based out of the Twin Cities. Lover of musicals and former graduate of MCTC, fae also occupies faer time outside of the theater writing for Fashion Week Minnesota, volunteering as a DEI consultant, and speaking on panels for local convention, CONvergence.

RICHARD GRAHAM (he/him) *Sound Engineer* **ARTISTRY:** *Some Enchanted Evening*, *Shrek*. **THEATER:** Sound Design: Guthrie: *Importance of Being Earnest* (asst.); Fox & Beggar: *Vanaheimr*; Ethnic Dance Theatre: *Reflections on the Danube*; Walking Shadow: *Feast*; Black Lives Black Words: *Emancipation of Yankee Oluwale*. As Sound Engineer: Theater Mu: *Again*, *Man of God*, *Peerless*, *Hot Asian Doctor Husband*; Great Northern/MN Opera: *Cold Air Rises*. As Sound Supervisor: Park Square: *The Revolutionists*, *Snowy Day*, *Fire in the New World*, *The Humans*; OffLeash Area: *Mulier Dierum*. Upcoming: Walking Shadow: *Feast*; Theater Mu: *Hells Canyon*; Unlabeled Theatre: *Shrek*. Richard is a member of the Theatrical Sound Designers and Composers Association. More at richardgraham.net.

SOUTH LOOP PUBLIC ART AUDIO TOUR

Use your smart phone to take a self-guided tour, and learn more about the art and artists.

Download the Otocast app at otocast.com or scan the QR code.

 **Otocast**
SEE. HEAR. EXPLORE.



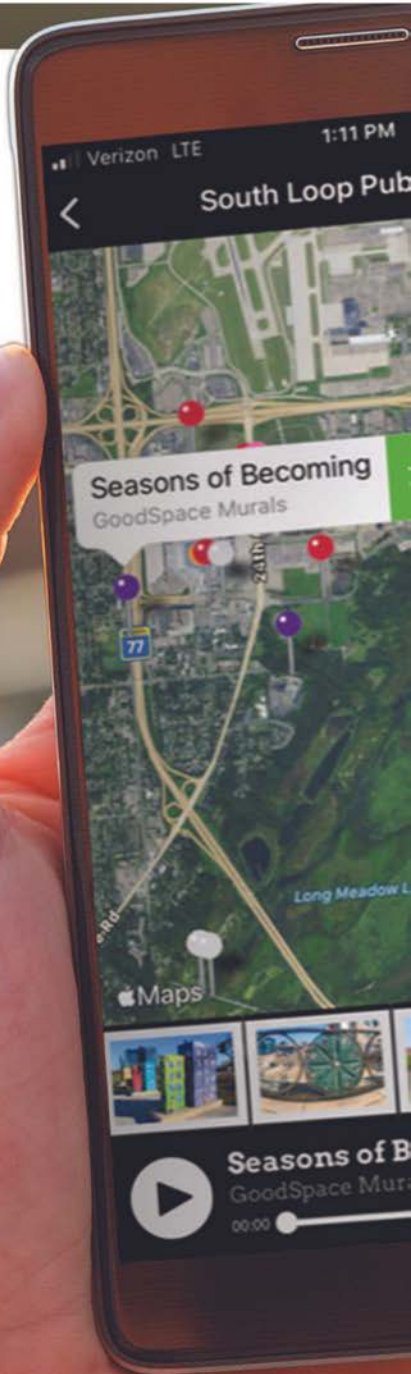
Detailed descriptions, photos, directions, and audio clips, including artist interviews, tell the stories behind the artwork you visit.

THE NEXT 10 PEOPLE to visit 10 public art locations will win a South Loop prize package!

More information:
blm.mn/placemaking,
952-563-8744, MN Relay 711



@SOUTHLOOPMN





ANITA RUTH *Music Director*

ARTISTRY: Resident Music Director from 2005-2022. Over 65 shows including most recently: *Shrek*; *Little Women*; *Songs for a New World*; *Bridges of Madison County*; *A New Brain*. **THEATER:** Chanhassen Dinner Theatres (Music Director 1968-1988).

Ruby's Cabaret (Music Director

1988-2001). Children's Theatre Company; Guthrie Theater; Park Square Theatre; Theater Mu. Anita is also a skilled arranger, orchestrator and Finale copyist.

GRANT E. MERGES (he/him) *Lighting Designer*

ARTISTRY: *The Music Man*, *Noises Off*, *The Drowsy Chaperone* **THEATER** (selected): Theater Latté Da: *Falsettos*, *Merrily We Roll Along*, *Once*; Jungle Theater: *Hand to God*; Penumbra Theatre: *Black Nativity*; Stages Theatre Company: *The North Star*, *James and the Giant Peach*, *The Hobbit*; Minneapolis Musical Theatre: *Othello the Remix*, *The Story of My Life*, *Big River*; GREAT Theatre: *Descendants*, *Grease*, *Newsies*; PRIME Productions: *The Roommate*, *Little Wars*; TaikoArts Midwest Ensō Daiko; River Valley Dance Academy: *The Snow Queen*, *The Nutcracker*; University of Northwestern: *The Lightning Thief*, *Peter Pan*, *Into the Woods*; Century College: *Rent*, *The Wolves*, *Macbeth*.

EDUCATION: MFA - MSU, Mankato.



BEN BAKKEN (he/him) *Producing Artistic Director*

ARTISTRY: *Some Enchanted Evening* (Director), *A Tribute to Queen* (Performer), *The Pajama Game* (Director/Choreographer), *Jesus Christ Superstar* (Ensemble) **THEATER:** *Jesus Christ Superstar*, *Grease*, *Hairspray*, *Footloose*, and more at Chanhassen Dinner Theatres;

Disney's High School Musical at Children's Theatre Company; *Once*, *Five Points*, and *Aida* with Theater Latté Da; *Smokey Joe's Cafe*, *Mamma Mia!*, and *The Rocky Horror Show* at the Ordway; *Teen Idol* at the History Theatre.

KATIE PHILLIPS (she/her) *Production Manager/Props*

Design/Costume Coordinator **ARTISTRY:** Properties Design: *Some Enchanted Evening*, *The 25th Annual Putnam County Spelling Bee*, *Godspell*, *The Pajama Game*, *Shrek*, *Memphis*, *Little Women* *The Broadway Musical*; *Songs for a New World*; *Bridges of Madison County*; *A New Brain*; *Our Town*; *Footloose*; *Tinker to Evers to Chance*; *Victor/Victoria*; *She Loves Me*; *Awake and Sing!*; *Mary Poppins*; *Follies*; *Noises Off*; *The Last Five Years*; *Wit*; *The Secret Garden*; *Little Shop of Horrors*; *Best Little Whorehouse in Texas*. **Scenic Design:** *Songs for a New World*; *Tinker to Evers to Chance*; *Awake and Sing!* **THEATER:** Scenic and properties designed for over 100 productions in the last twelve years. Representative theaters include: Bucket Brigade, Dark & Stormy Productions, Gilbert & Sullivan Very Light Opera Company, Lyric Arts, Nightpath, Stages Theatre Company, S.O.S. Theatre, and Yellow Tree.

WILL RAFFERTY (he/him) *Technical Director*

ARTISTRY: *The 25th Annual Putnam County Spelling Bee* (Technical Director), *Godspell* (Technical Director), *Shrek: The Musical* (Head Carpenter), *Memphis* (Technical Director), *Little Women* (Carpenter), *Songs for a New World* (Carpenter), *Mame* (Carpenter/Drafter) **THEATER:** Theater Latte Da, The Jungle Theater, The U of M Dept. of Theatre Arts and Dance, Penumbra Theatre. Will is always happy to return to Artistry and looks forward to his next project in this space. He graduated from The University of Minnesota Duluth with a BFA in Technical Theater. <https://willrafferty01.wixsite.com/mysite>

ERIC HERR-MADSEN (he/him) *Audience Services Manager*

A graduate of the University of Wisconsin - River Falls, Eric has been in the theatre arts most of his professional career having previously worked at Park Square Theatre for nearly 18 years, as well as part-time gigs in the box offices at History Theatre, The Ordway Center, The Fitzgerald Theatre. He also spent 4 summers as Audience Services Manager & Volunteer Coordinator for the Minnesota Fringe Festival. His love of theatre started in 2nd grade after being cast as the Royal Chef & Chef #2 in *The King's Soup*, (*a challenging dual role debut!*) He credits his educators in High School and College for firmly believing in theatre education. He is thrilled to be working on the staff at Artistry Theatre having joined the staff last season during Memphis!

KELLI FOSTER WARDER (she/her) *Executive Artistic Director*

is an artist and arts administrator, based in the Twin Cities. Kelli has both taught been a teacher and served as an arts administrator for over 30 years. Her work as a choreographer and director has been seen on across stages in the Twin Cities and across the country including Theater Latté Da, The Ordway, Children's Theatre Company, The 5th Avenue in Seattle, Washington, Asolo Repertory Theatre in Sarasota, Florida, the ZACH Theatre in Austin, Texas and Signature Theatre in Arlington, VA. Kelli has worked internationally as a director and choreographer in both La Paz, Bolivia and Panama City, Panama. As an arts administrator Kelli worked with Hennepin Theater Trust, The Ordway, and most recently as the Associate Artistic Director/Director of Impact at Theater Latté Da in Minneapolis, where she was a strong voice in artistic planning, deepening the company's community engagement, and advancing initiatives in inclusion, diversity, equity and access (IDEA).

JESSICA SWANSON (she/her) *Visual Arts & Operations*

Coordinator **ARTISTRY:** *The Pajama Game* (ASM), *Memphis* (ASM), *Shrek* (ASM) **THEATER:** History Theater: *The Boy Wonder* (ASM). Sod House: *Rare* (Stage Manager). Cornell University: *Locally Grown Dance Festival* (Stage Manager); Kitchen Theatre Company (Stage Management Intern); American College Dance Associate: *2015 Dance Festival* (Stage Manager); The University of Montana: *Angels in America, Part One*; (Stage Manager), *You Can't Take It with You* (Stage Manager) TV/FILM: Easy Open Productions: *Here Alone* (Costume Assistant) Jessica holds a BFA in Stage Management from The University of Montana.

ANNUAL FUND DONORS

We are grateful to the following individuals for investing in Artistry's mission and vision.

ARTISTRY SOCIETY

Recognizes annual fund gifts of \$2,500 and above.

\$10,000+

Penny Bond & Charles Grimsrud
John* & Theresa Gibbs
Roger Grette (in memory of Myrtle Grette)
Karen* & Bud Nordstrom
Bob & Sally Purvis
Allan & Debby Schneider
Gilbert Williams (in memoriam)

\$5,000+

Anonymous (1)
Lisa & Guy Guzek
Montagne
Sue Saltarelli

\$2,500+

Anonymous (1)
Teryll Brumm
Jane Chronister*
Joy & David Drummond
Paul & Nancy Gubrud
Jennifer Melin Miller & David Miller
Patrick Milan* & Caroline Kaiser
Shelley Peterson*
Erik & Mary* Prentnieks
Cheri Rolnick*
Terry & Pat Rosborough

SUSTAINERS CIRCLE

Recognizes annual fund gifts of \$1,000 to \$2,499.

Mark Adkins
Timothy Claus & Louise &erson
Pam DeLaittre
Dianna Dronen
Beth Fischer
Lindsay Korstange*
Larry & Betsy Lee
Patricia Lindsley
Rob & Chris Lunz
Sarah Maxwell
Carol & Doug Ogren
Kate Pehrson*

Randy Pratt & Mark Johnson
Silbaugh Family Giving Fund
Gary & Mary Schlieckert
Karen & Bill Snedeker
George & Janet Stevens
Janet Stevens
Don & Leslie Stiles
Terri Tersteed & Jim Peterson
Julie & Curtis Tvete

SYMBOL KEY
*ARTISTRY
BOARD MEMBER

Patrons

(\$500-\$999)

Jason Moore & Craig* Ashby
Alice & Bob Bakken
Carolyn Beahen - Dedicated to Bradley Beahen
Joyce & Ron Beauchane
Bonnie Carlsson
CDT Footloose cast members
Will & Andrew Collis-Prather
Bob Erickson
George Ferguson
Dean & Deb Hoffrogge
Burt & Sandra Hoverson
Timothy & Cheryl Krause
David McElroy Family Fund
Gary Nygaard
Paul & Carol Petronack
David & Linda Ripka
Evelyn Schulte
Terry Shima
Wendy Short-Hays
Jennifer & Daniel Tenenbaum
James & Jincy Vaitkunas
Barbara Vogler
Heidi & Dave Weiler

Partners

(\$250-\$499)

John & Jeralyn Anderson Family Fund
Linda Batterson
Claire Bauer
Steve Peterson & Kalli Bennett
Ann Gray & Andy Bond
Mark & Jane Brossart
Karen Cohen
Becky Garay
Barbara Golden
Mark & Susan Hughes
Karen Jakubowsky
Jeremiah & Pamela Kearney Family Fund
Noreen & Steve Linney
Jonathan Lovitz & Steve Sosna
Tess Mertens-Johnson
Jackie & James Moriarty
Ruth & Chuck Oliver
Sandra Overland
Julia Perry
Gary & Sandra Pietig
Art & Jan Seplak
Kent Smith
Andrea Specht
Denise & David Thoen
William Velte

Friends

(\$100-\$249)

Anonymous (11)
Al & Connie Anderson
Alfred Anderson
Carissa Anderson
Delores Anderson
Thomas Anderson
Beth Bergman
Gail Bertossi
Catherine Black
Joanne Block
Pat Boehne
Chris Carlson
Joan Carlson
Randy & Lisa Comfort
Judy Cooper
Dale S Copeland
Marguerite Cowles
Joyce Cundy
Dennis Daniels
Don & Judy Day
Dan Delaney
Arty Dorman
Sally Dunn
The Eisenbeis family
Steve Elkins
Linda Engberg
Larry & Jane Eshleman
Marie Feely

OPENING MARCH 1ST!

Beautiful

The Carole King Musical

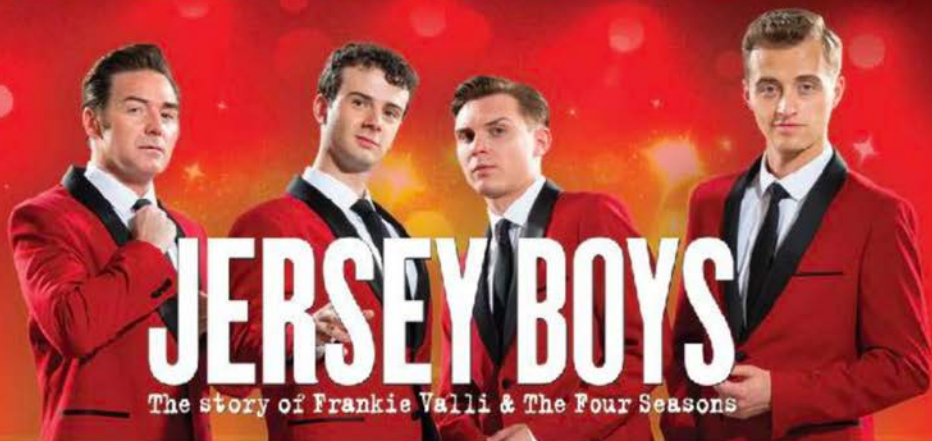
The story of Carole King's rise from teen songwriter to music legend.

NATURAL WOMAN ONE FINE DAY
MOTION YOU'VE GOT A FRIEND



Model Behl as Carole King in BEAUTIFUL: THE CAROLE KING MUSICAL at Studio City. Photo by Matt Tuck.

**DON'T MISS OUT:
CLOSING FEBRUARY 24TH!**



JERSEY BOYS

The story of Frankie Valli & The Four Seasons

entertaining you!

Chanhassen
DINNER THEATRES

952.934.1525
ChanhassenDT.com

Sara & Karl Fiegenschuh
Frutel/Johnson Giving Fund
Blaine Garrett (MPLSART)
Jeanne Grau
Gregerson Family Fund
Dolores Gutierrez
Dr Daniel C Hartnett Family
Foundation
Janet Havlicek
Kristen & Loren Heeringa
Bruce & Lani Held
Kristine Henderson
Diana & John Herman
Guy & Janice Herr
Dale & Pat Hildestad
Cheryl Houle
Bill & Connie Hreha
Cindy Jensen
Marcia Jones
Mary Rose & David Kaliher
Georgia & Joe Kandiko
Sheila Kelly Hoyt (In Honor
of Bruce Hoyt)
Andy Kiorpes & Farrel Rich
Lynn & Ron Knapp
Linda Koch
Cindy & Larry Koehler
Jesse Kuhn
Kathleen Kvern

Ruth Ladwig
Patricia Laulainen
Susan Liesch
Margaret Lorayne
James & Lynda Mader
Vicki Madsen
Patricia & Gerald Maher
Richard & Barbara Makela
Bill Manahan
Patricia Capriotti Martin
Ricky A. McAllister
Layl McDill
L David Mech
Jean Montgomery
Don & Carol Nash
Randy Nelson
Robert Nelson
Steve & Amy Nelson
Andrew Newman
Costas & Barbara Nichols
Patricia Olson
Craig Osten
Agneta Parr
Ryan Lee & Tod Petersen
Anne & John Polta
Peggy Polta
Kathryn Potter
Jodi Reeb
Judy Reiber
Jerry & Carole Reid

Neil Anderson &
Johanna Rian
Ione & Roger Rolstad
Paulette Rush
Carter & Becca Sample
Paul Schiller
John & Gillian
Schoonover
Greg Schou
Jamie Schumacher
Mary Seifert Mackmiller
Donna Seorum
Adelene Sharratt
Michael Sherman
C Ryan Shipley
Wendy Short-Hays

Dr. Stephen Sinykin
Nancy & Paul Stapleton
Kristin Strom
Hildy Swedean
Jay & Eileen Taylor
Ben Vinar
Dudley Voigt
Jodi & Andrew Vollmuth
Betty Wallien
Steven & Catherine Webster
Joe & Jennifer Weismann
Ken & Barb Weldon
Colin & Jenifer Williams
Paul Williamson
Kathleen Woudsra
Carol Zempel & Jeff Waterworth

This list is current as of 1/16/24
& includes donations & pledges
of \$100+ since July 16, 2022.

Please accept our sincere
apology for any errors or
omissions & notify us so we may
correct future listings.

ORDWAY

YOU CAN'T STOP THE BEAT

hairspray

BROADWAY'S TONY AWARD®-WINNING BEST MUSICAL IS BACK

MAR 12-17

ORDWAY.ORG | 651.224.4222

BROADWAY @ THE ORDWAY
SPONSORED BY **BREMER BANK**

VOLUNTEERS

Lobby Managers

Patty Cook
Tess Mertens-Johnson
Sue Perko
Sue Saltarelli
Jean Smidt

Ushers

Ann Delano
Ann Geister
Bob & Alice Bakken
Bridget Cerny
Carol Casey
Carol Osknes
Carolyn Robinson
Catherine Ronayne
Cathleen Marquardt
Cynthia Elmquist
Deb Heile
Donna Dahl
Dorene Vogland
Elizabeth Hughes
Gabriella Trentacoste
Hassan Barzani
Jan & Ken Brixius
Janae & Taylor Anne Barriuso
Janelle Litchfield
Jean Iwen
Jeanne Fuller
Joanne Broady
Joyce Buffington
Joyce Miller
Judy & Bill Kraft
Julie Andert
Karen Eileen
Kim Coon
Laurie Thiers
Linda MacLeod
Linda Wodele
Lorraine Diamond
Lorraine Kenfield
LuAnn Currie
Marcy Kelash
Mary and Barb Boerner
Mary Bisson
Mary Chapman
Mary Ellen Goriesky
Melonae & Tom Kunz
Nancy Stapleton
Noah Coon
Pam Donaldson
Patty Cook
Rebecca McPeek
Roxanne Litchfield
Ruth Hiland
Sandra Hoverson
Sue Perko
Sue Saltarelli
Vicki Madsen

Scheduled as of 1/16/24

BOARD OF DIRECTORS

PRESIDENT Patrick Milan, *Chief Insights Officer, Tunheim*

TREASURER Shelley Peterson, *Commercial Banking Relationship Manager, Vice President BMO Harris Bank NA*

SECRETARY Annette K. A. Lee, *Senior Account Executive, Levi Strauss & Co.*

MEMBERS Craig Ashby, Jane Chronister, Julie Denning, John Gibbs, Lindsay Korstange, Paul Niederberger, Karen Nordstrom, Kate Pehrson, Alexandra Pickell, Mary Prentnieks, Brenna Ramy, Megan C. Rogers, Cheri Rolnick, Arthur C Turner III

LEARN MORE AT ARTISTRYMN.ORG AND CONNECT WITH US AT



ARTISTRYMN



@ARTISTRY_MN



NOW ON SALE!
ARTISTRYMN.ORG/SUMMERCAMP2024

ACCESSIBILITY SERVICES

Welcoming and developing audiences is part of our mission, and we are pleased to provide the following services at no charge. For more information and details, please visit artistrymn.org/plan-your-visit.

Assisted listening devices are available at no charge for every Artistry performance in the Schneider Theater.

American Sign Language (ASL) interpretation is available for *Crazy For You* on 2/30/24 at 7:30pm. Interpreted by: Logan Yakesh & Andrea Opatrny.

Audio Description (AD) is available for *Crazy For You* on 1/28/24 at 2pm. Audio Description by Rick Jacobson.

Wheelchair Accessibility exists throughout the theater and the Bloomington Center for the Arts. The Schneider Theater has accessible wheelchair/scooter seating and a limited number of transfer seats available.

Large-type, Braille, and other Alternate Format program information is available with two weeks advance notice.

Parking: Accessible parking is available in all Bloomington Center for the Arts lots. The closest and most convenient accessible parking is in the lot on the west side of the building.

Public Wheelchairs: The Bloomington Center for the Arts has wheelchairs and one power scooter available for public use free of charge. Please inquire at the City Information Desk when you arrive.

Restrooms: All restrooms in the Bloomington Center for the Arts are fully accessible to patrons in wheelchairs. An all-gender, fully-accessible, private restroom is available on the main floor.

HAVE YOU EXPLORED OUR GALLERIES?

INEZ GREENBERG GALLERY

1800 West Old Shakopee Road
Bloomington Center for the Arts
Main Floor



Chromatic Dialogue, Kathleen Kvern & Dodie Lague (2023)



Gidibaajimomin, Gordon Coons (2023)

At the Wildlife Refuge!

Confluence
GALLERY

Minnesota Valley
National Wildlife Refuge

3815 American Boulevard East
Bloomington, MN

ATRIUM GALLERY

1800 West Old Shakopee Road
Bloomington Center for the Arts
2nd Floor



Identity, Blair Treuer (2023)



952.563.8575
ARTISTRYMN.ORG



ARTISTRY
THEATER and VISUAL ARTS